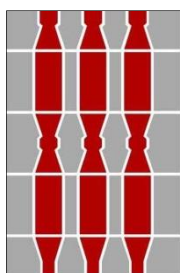


Regione Umbria



Provincia di Perugia




**Progetto per la Razionalizzazione della gestione e della relativa
viabilità di collegamento alla Discarica per rifiuti non pericolosi di
Borgo Giglione**

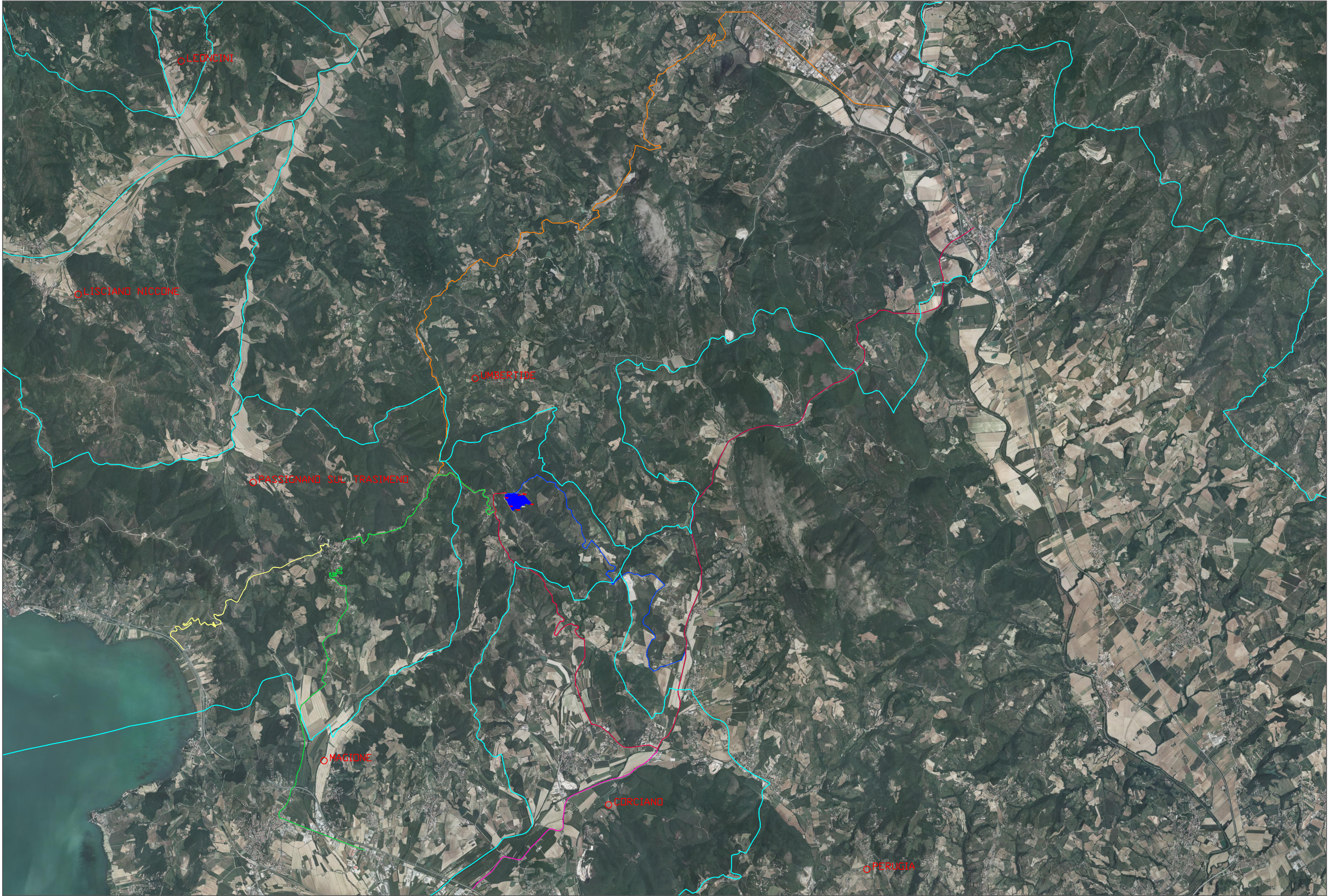
PROGETTO PRELIMNARE

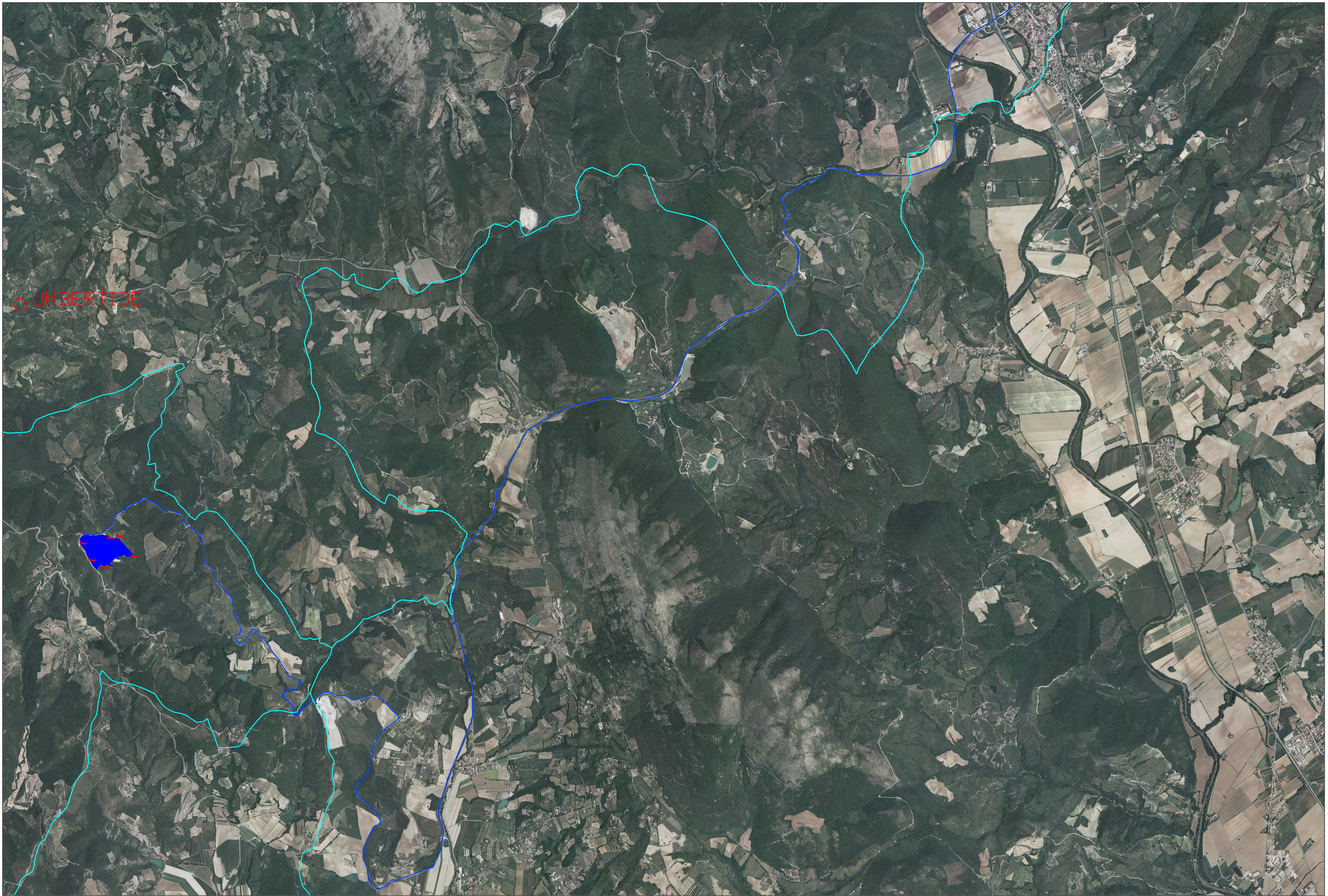
Elaborato:

Allegato A

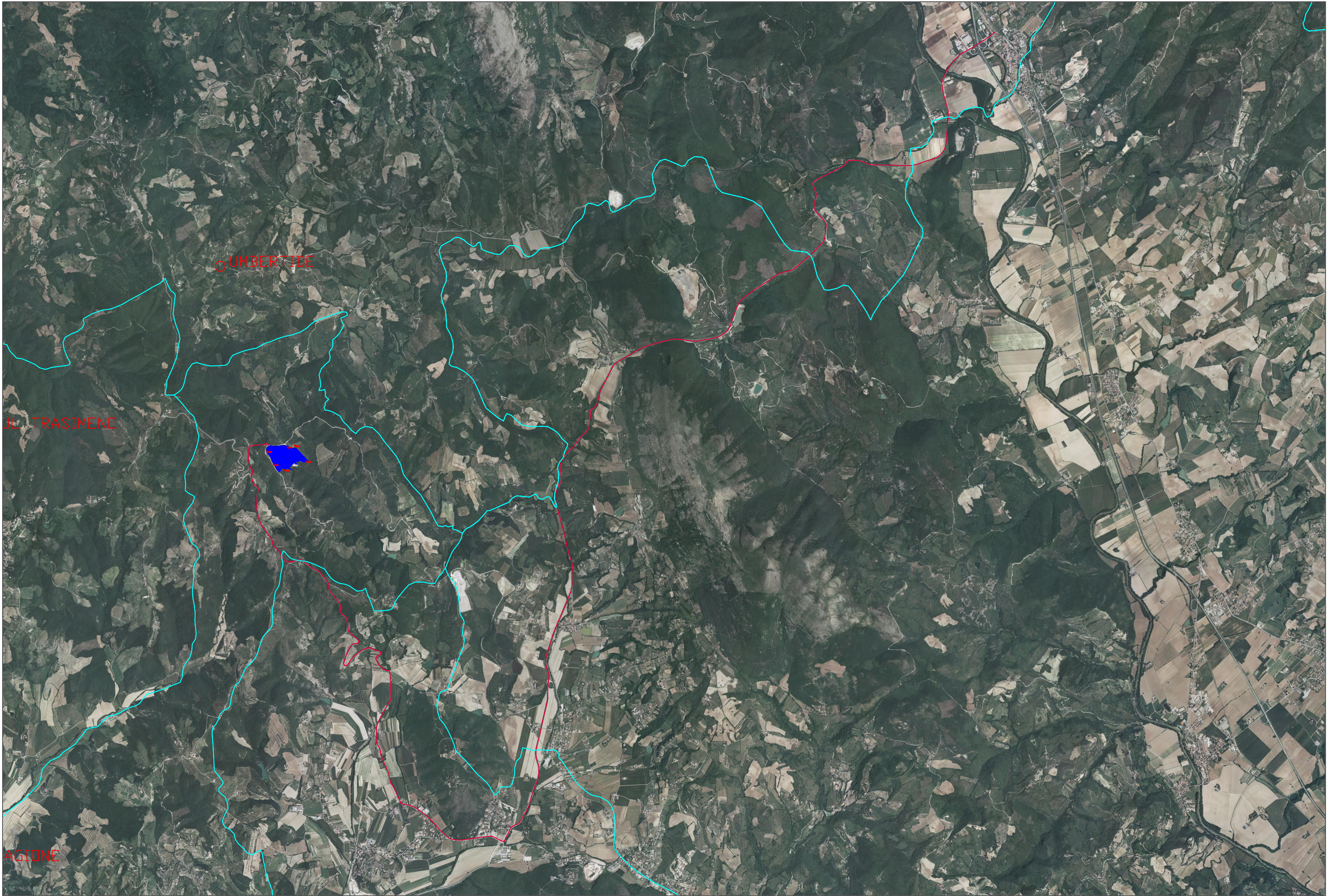
Proponente:	Progettazione:
	Ing L. Rotondi Ing. C. Festuccia

01	Sett-2015	Revisione	C.F	L.R	L.R.
00	Giu-2015	Prima emissione	C.F	L.R	L.R.
REV.	Data	Descrizione	Preparato	Controllato	Approvato

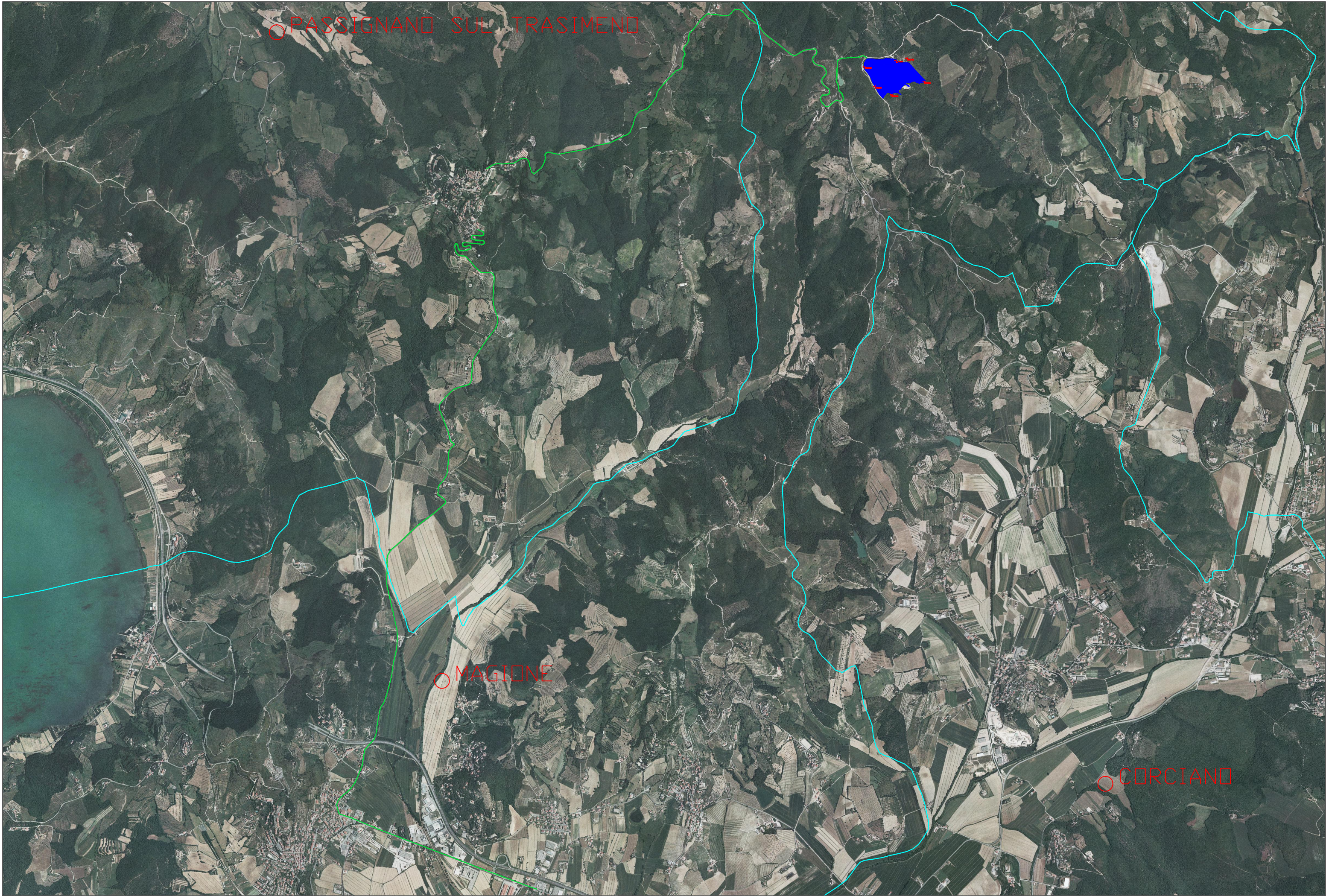




○ UMBERTIDE



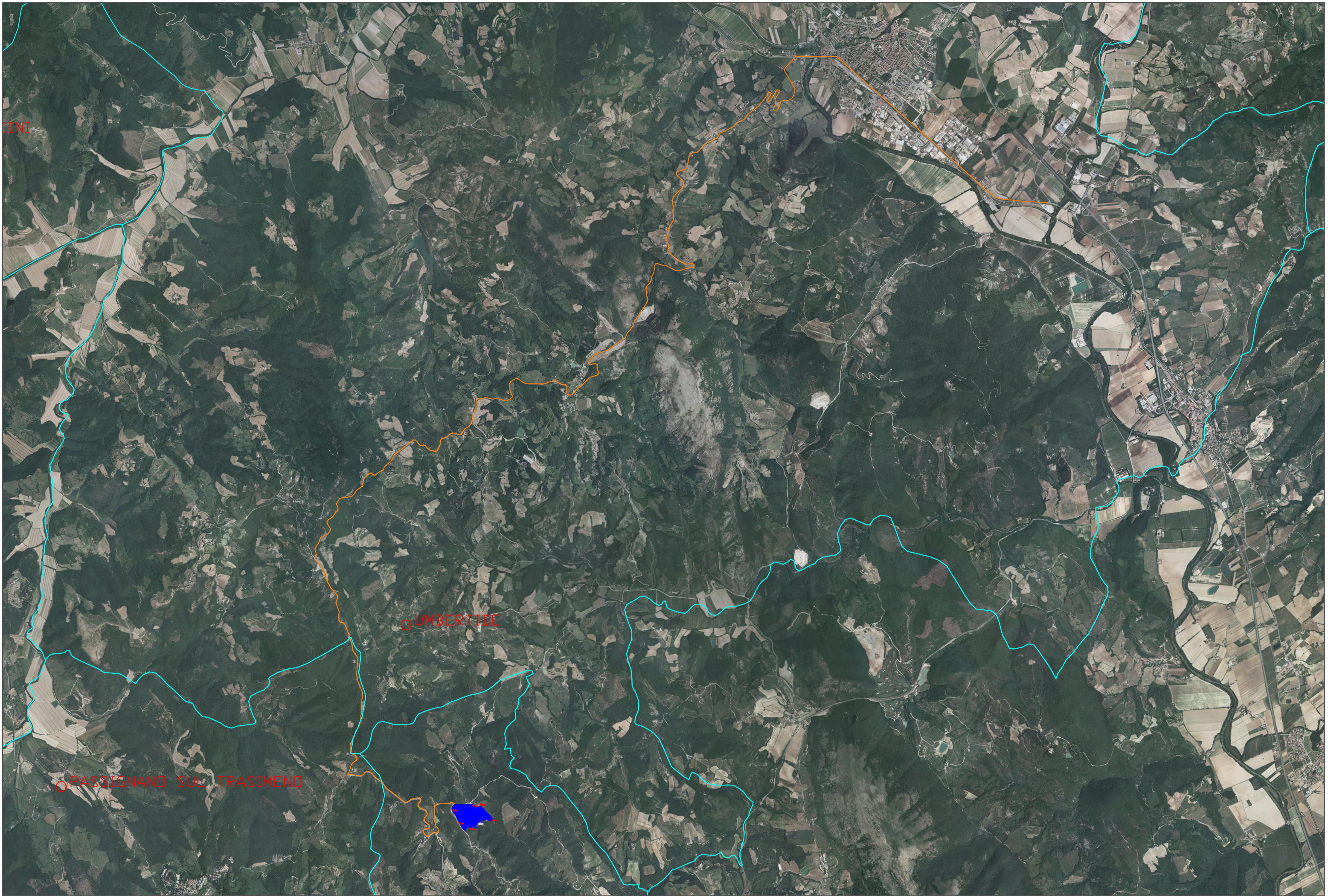
SCALA 1 : 45.000 PERCORSO 2 "LE FRATTE"



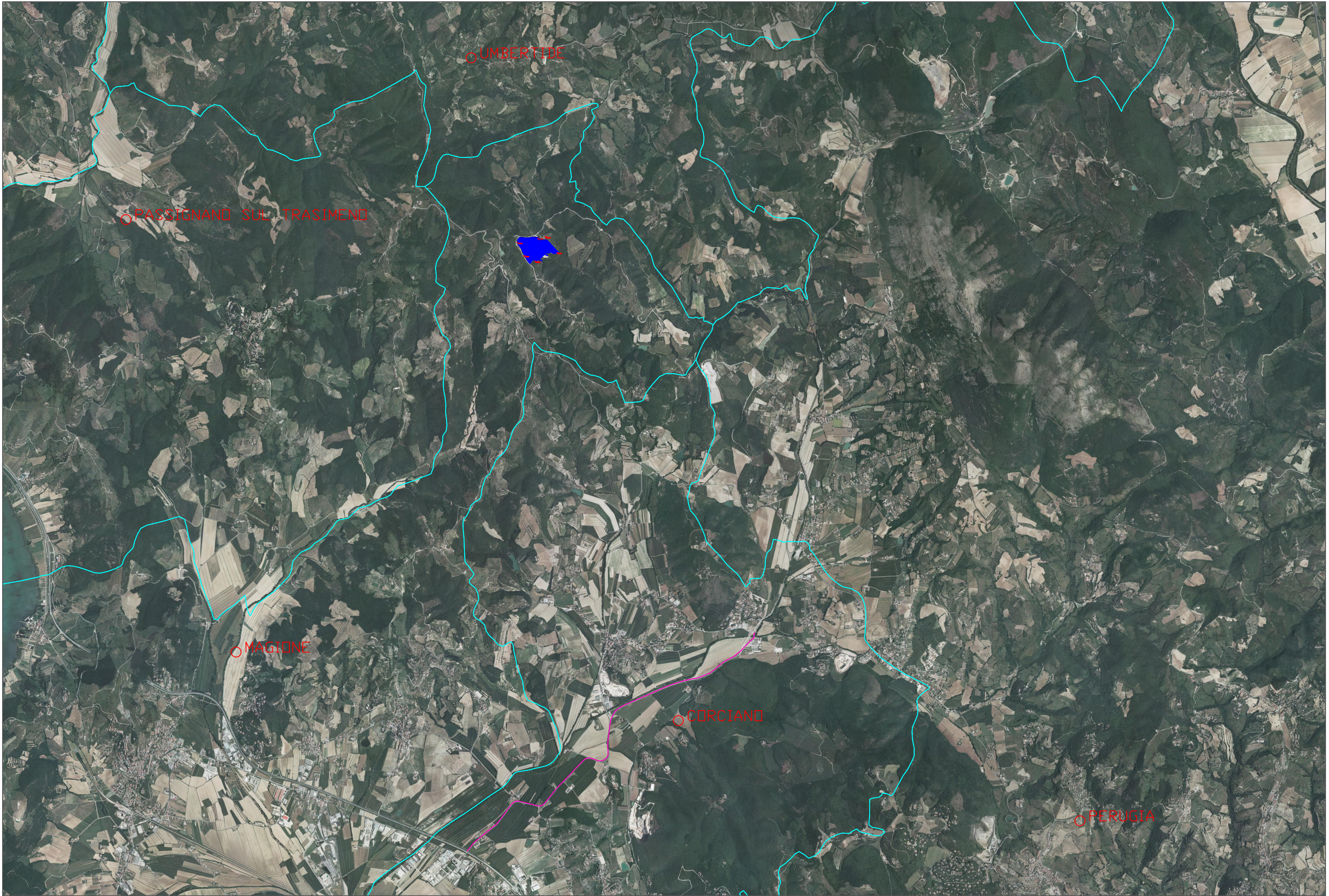
SCALA 1 : 30.000 PERCORSO 3 "COLPICCIONE"



PASSIGNANO SUL TRASIMENO



SCALA 1 : 45.000 PERCORSO 5 "UMBERTIDE"



SCALA 1 : 45.000 PERCORSO 6 "MANTIGNANA"